



Data Backup & Message Archiving

Steve Scheidegger
Barracuda Networks



Agenda

- Company Background
- Challenges facing IT
 - Data Management, Backup, DR
 - Email Infrastructure
 - Instant Messaging
 - Compliance/Litigation (FRCP)
- Solutions
 - Barracuda Backup Service
 - Barracuda Message Archiver
 - Barracuda IM Firewall



Challenges in the world of IT

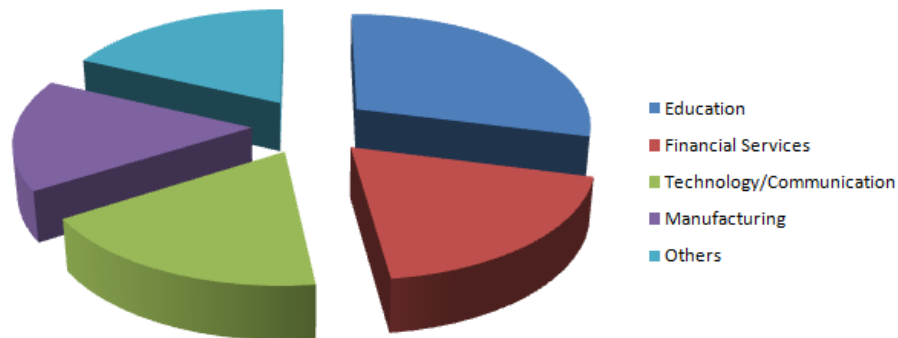
- 40% of businesses that experience disaster never reopen. Of the remaining businesses, 25% close within the following two years. *US Department of Labor – Bureau of Labor Statistics*
- Electronic records of business are considered as evidence in lawsuits
- 35% of employees use IM at work
- 86% of email storage space is taken by attachments
- Lets discuss the problems in detail and their solutions, starting with compliance/litigation and Data Backup...

* University of Texas Center for Research



FRCP (Federal Rules of Civil Procedure) and who it applies to

- Not targeted towards any specific industry or group
 - Unlike rules imposed on broker-dealers by SEC or NASD
- Any organization
 - Doing business across states lines
 - Involving civil rights
 - Breakdown of organizations faced with E-Discovery





Amendments to FRCP (Federal Rules of Civil Procedure)

- Amendment relating to discovery of ESI
- Includes Emails, Instant Messages and Files

The amendment to Rule 16(b) is designed to alert the court to the possible need to address the handling of discovery of **electronically stored information** early in the litigation if such discovery is expected to occur. Rule 26(f) is amended to direct the parties to discuss discovery of **electronically stored information** if such discovery is contemplated in the action



Challenges with Existing Backup Solutions



Removable media is easily stolen, lost or damaged



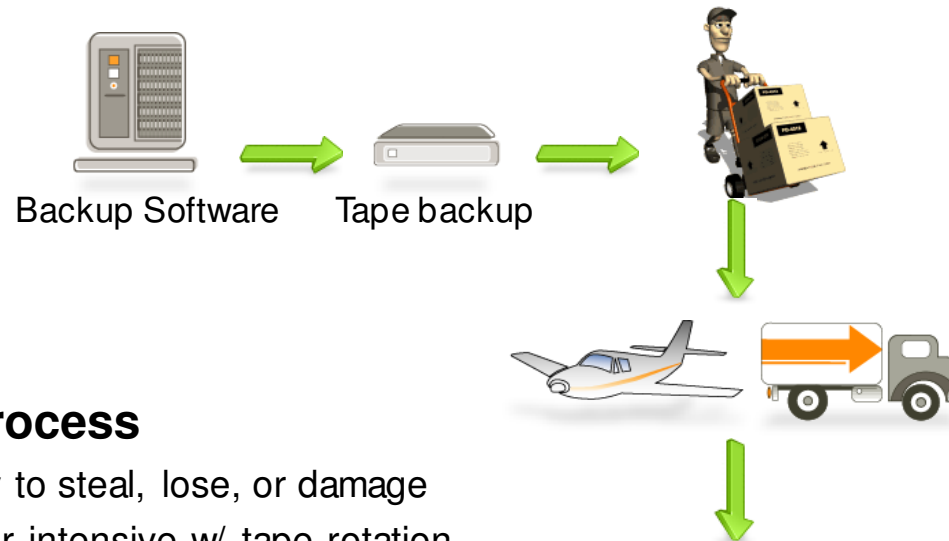
Time consuming and expensive to maintain



Lack of proper controls, exposes organization to legal risks



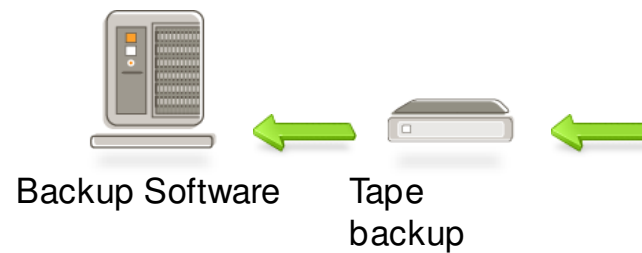
Many vendors and costs for scaling media and software needs.



Traditional Backup Process

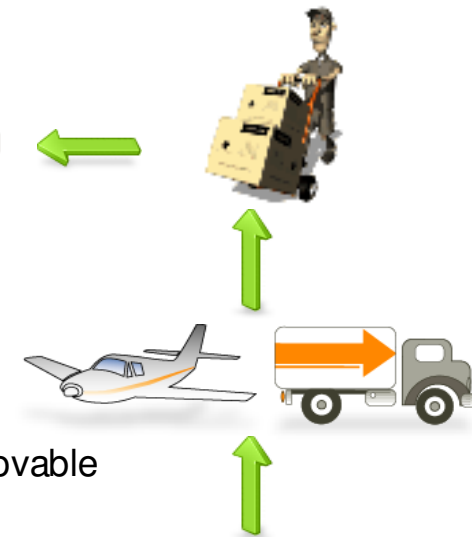
- Removable media is easy to steal, lose, or damage
- Time consuming and labor intensive w/ tape rotation
- Do not provide instant and simple accountability
- Backup data exists in a single location
- Difficult or expensive to take offsite securely

Tape Storage Services (Iron Mountain)

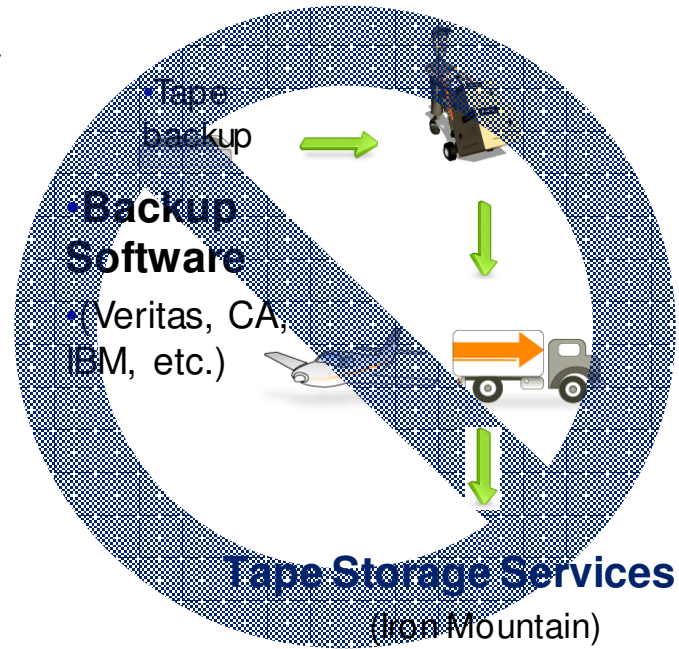
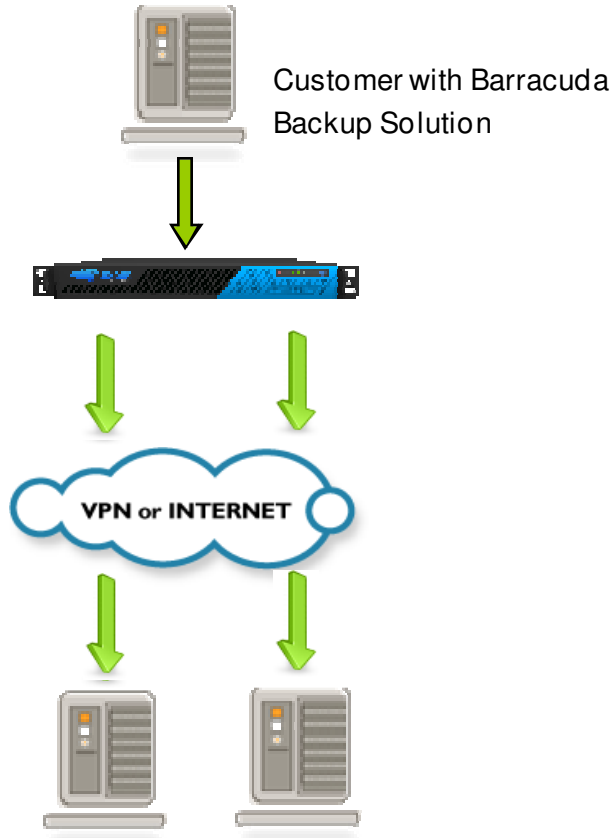


Traditional Recovery Process

- Time consuming recovery process to find and load removable media
- Cost of recovery methods
- Risk of the quality of removable media
- Time consuming to actually find data needing restore

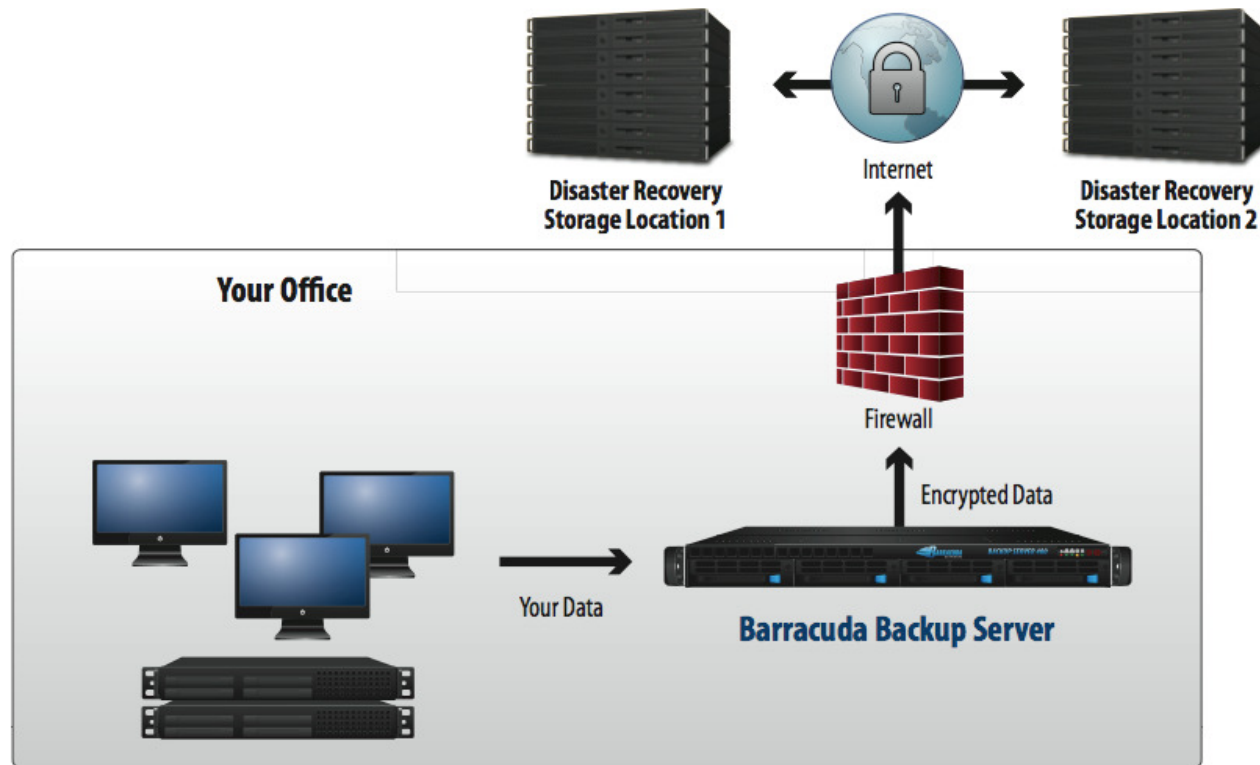


Tape Vaulting Services
(Iron Mountain)





Barracuda Backup Service Deployment





Barracuda Backup Service Features

- Local backup to Barracuda Backup Server
- Offsite, cloud storage at Barracuda Central
 - 256-bit AES transfer encryption
 - Data de-duplication
 - Two geographically dispersed locations
- Multiple restoration options
 - Barracuda Restore Client for Windows (local & offsite)
 - FTP (local), FTPS (from Barracuda Central)
 - Barracuda Backup Web interface
- Advanced administration features
 - Advanced rules for scheduling, data retention, and file watching
 - Automated email alert notifications for warnings, errors, and events
 - Centralized management from Web interface



Supports many Data Sources

Native Windows Agent
Backup Software



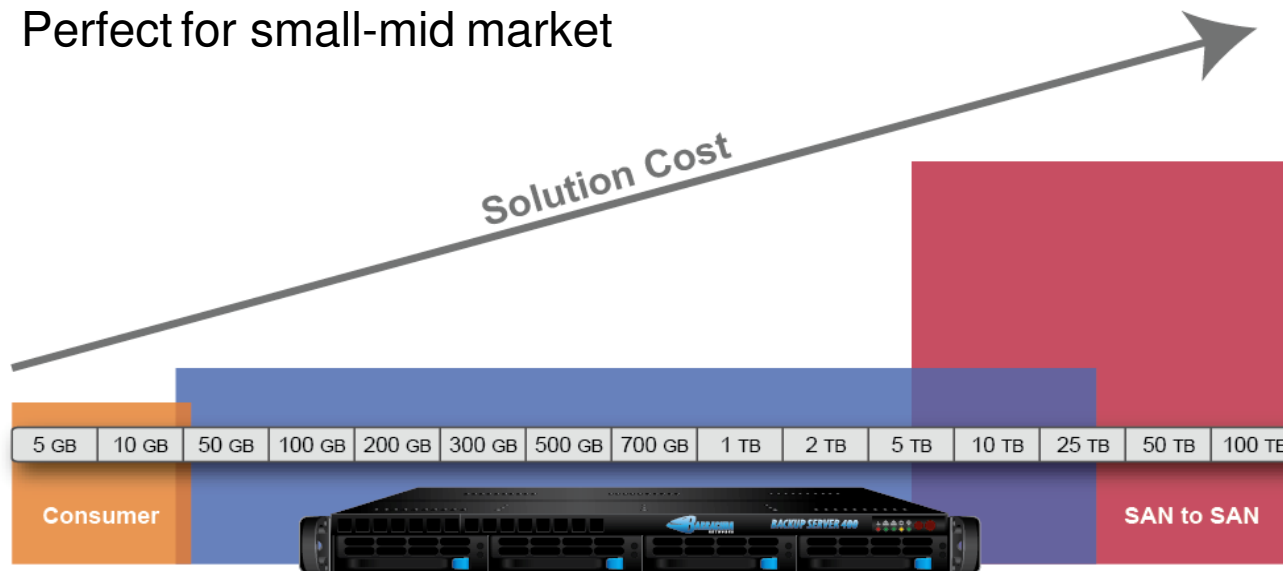
Support for most Operating Systems





Barracuda Backup Service Market

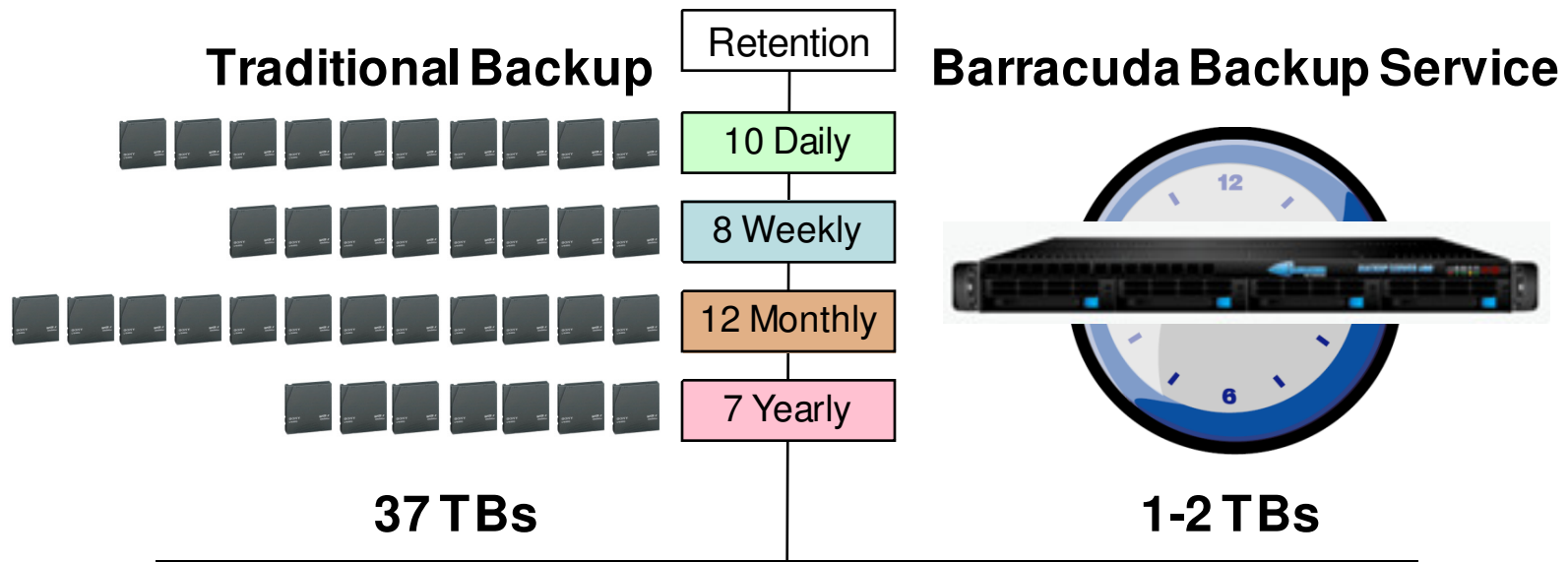
- More features / support than consumer backups
- More affordable than SAN replication
- Perfect for small-mid market





Data Deduplication

- Protecting a typical 1 TB primary storage volume



- Powerful block-level inline data deduplication
- Dedicated hardware enables aggressive compression



Barracuda Backup Server Models



Model 190

Suggested Backup Volume: 100 GB
Internal Capacity: 250 GB



Model 390

Suggested Backup Volume: 500 GB
RAID Internal Capacity: 1 TB



Model 490

Suggested Backup Volume: 1 TB
RAID Internal Capacity: 2 TB





Barracuda Backup Server Models



Model 690
Suggested Backup Volume: 2 TB
RAID Internal Capacity: 4 TB



Model 890
Suggested Backup Volume: 4 TB
RAID Internal Capacity: 8 TB



Model 990
Suggested Backup Volume: 12 TB
RAID Internal Capacity: 24 TB





Barracuda Backup Service Overview

- Barracuda Backup Server provides full local backup
- Backup processes run automatically
- Data is deduplicated inline during the backup process
- Backup data is securely transferred offsite
- Offsite data stored in two secure data centers
- Multi-Location centralized management
- Flexible and simple day to day and DR restoration options



Barracuda Message Archiver

- Integrated hardware and software
- Archiving and policy management
- Search and retrieval
- Internal storage and support for external storage
- Works with all standards-based email servers
 - Microsoft Exchange
 - Lotus Domino
 - GroupWise and others





Archiving and Backup.... The differences

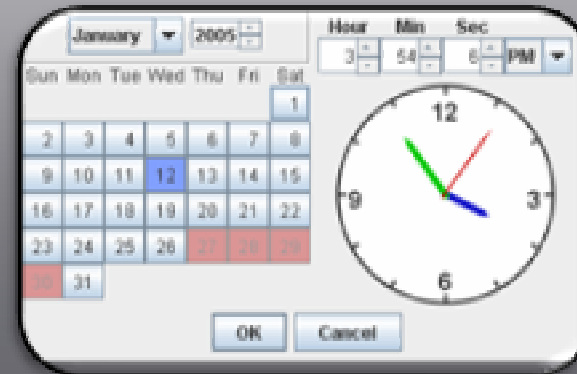
Archiving

- Designed for long retention
- Plan to save everything
- Indexing and searching is critical



Backup

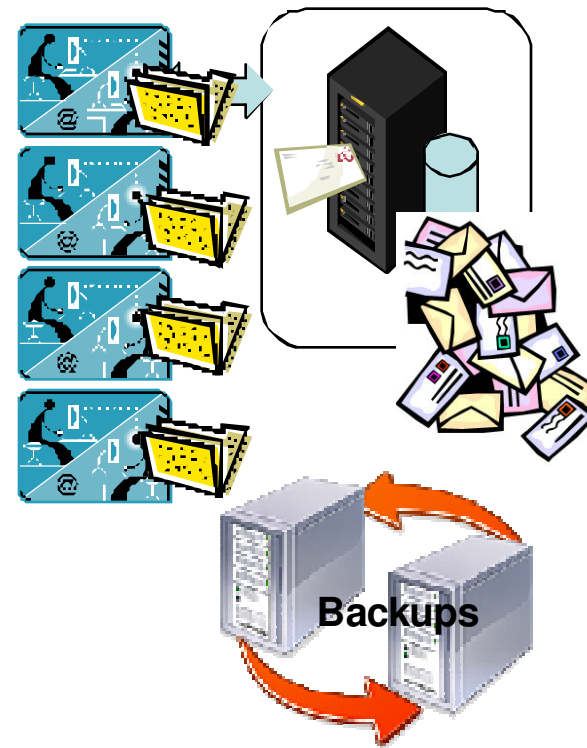
- *Backup* of primary data source
- Deletion from Primary Source deletes from backup
- Point in time snapshots





Challenges with Existing Email Infrastructure

- Emails stored on server
- Moved to archival files after time
 - PST files
- Increase in network traffic
 - Backups
 - Access archived files
- Multiple files cause problems
 - Breakdown of Single Instance Storage
 - Losing laptop is a security issue
 - Searching multiple places

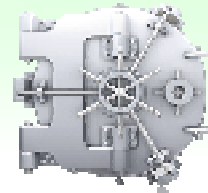




Barracuda Message Archiver Benefits



**SAVE, SEARCH
AND STORE IN A
SINGLE PLACE**



**REDUCE EMAIL
STORAGE
REQUIREMENTS**



**SOLVE
COMPLIANCE
AND LITIGATION
CHALLENGES**



**EASY
DEPLOYMENT**



Barracuda Message Archiver Benefits

SAVE, SEARCH AND STORE IN A SINGLE PLACE

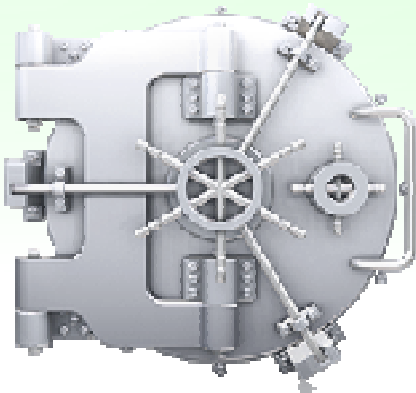


- Inbound, Outbound and Internal Emails
- Integrated access from Microsoft Outlook
- Eliminate PST files
- Compression, de-duplication and indexing



Barracuda Message Archiver Benefits

REDUCE EMAIL STORAGE REQUIREMENTS



- Offload emails from server with Exchange stubbing
- External storage with CIFS
- iSCSI integration (high end models)



Barracuda Message Archiver Benefits

SOLVE COMPLIANCE AND LITIGATION CHALLENGES



- Comprehensive search for e-discovery
- Separate auditor access
- Export to PST



Barracuda Message Archiver Benefits

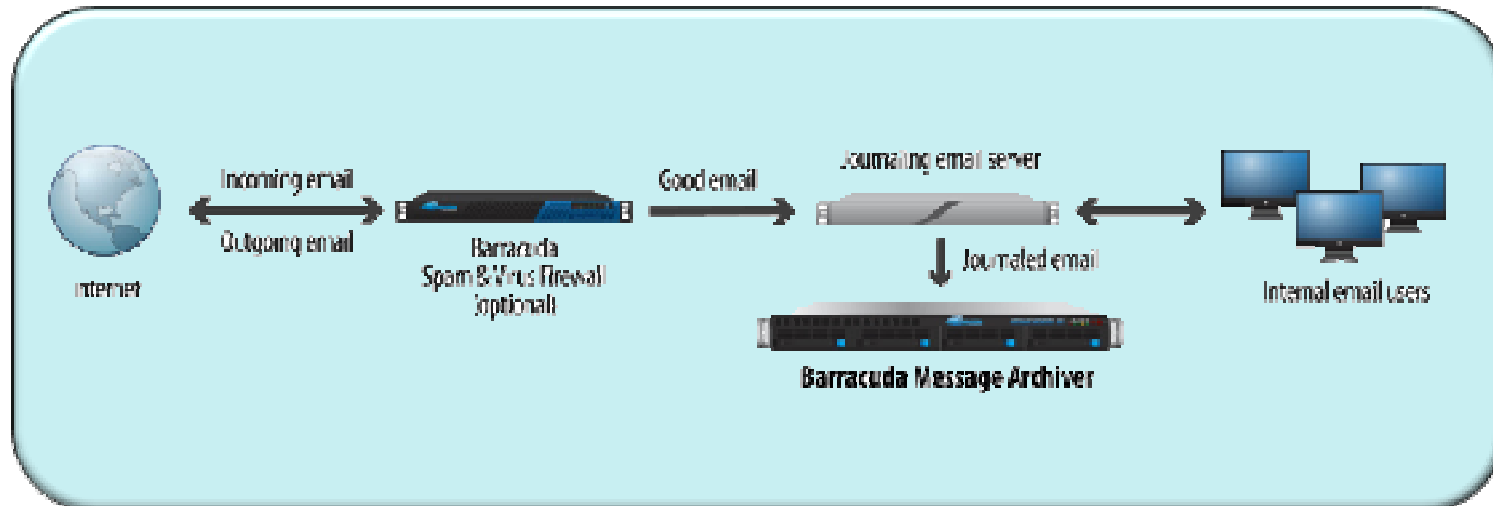
EASY DEPLOYMENT



- Granular retention policies
- Custom and pre-built policies
- Immediate and digest alert notification



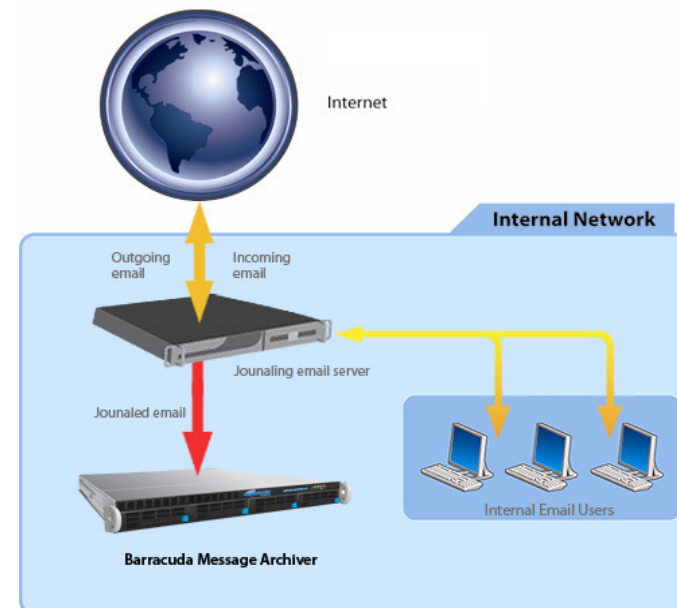
Typical Deployment





Barracuda Message Archiver

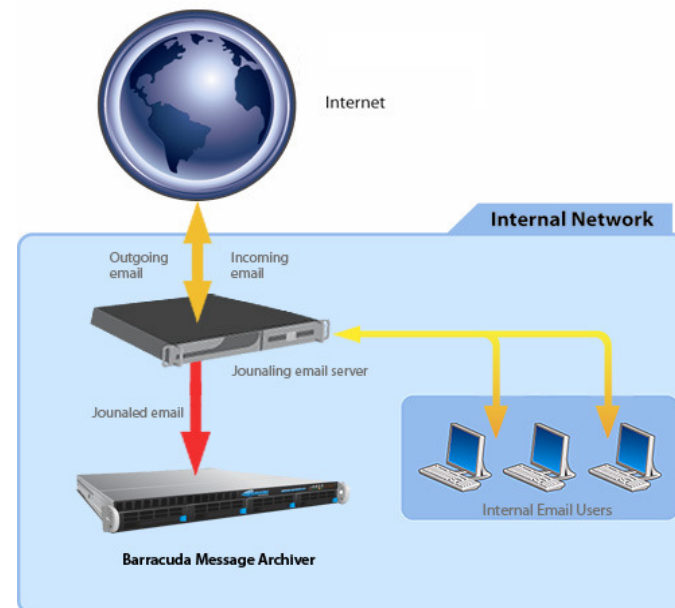
- Archives all email – inbound & outbound
- Integrated hardware and software
- Search and retrieval
- Internal storage and support for external storage
- Works with all standards-based email servers
 - Microsoft Exchange
 - Lotus Domino
 - GroupWise and others





Advantages

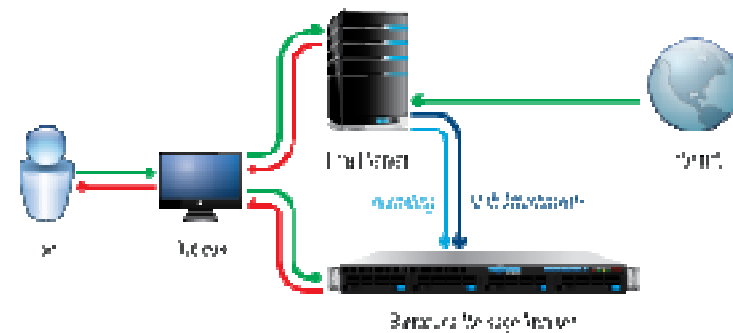
- Easy to deploy and use
- Maintenance and Hassle Free
 - Backed up Barracuda Central
- Appliance Advantage
 - Integrated hardware and software
 - No database to install
 - Integrated storage
 - Import existing PST files





Reduce storage requirements on your server

- Exchange Stubbing
- Move email attachments to the Barracuda Message Archiver
- Replaced with a *stub*
- Stub allows access via Outlook and OWA
- Outlook Add-in allows for users to access emails without learning a new interface





Multiple Models

MODEL COMPARISON	MODEL 150	MODEL 350	MODEL 450	MODEL 650	MODEL 850	MODEL 950
CAPACITY*						
Maximum Users	75	500	1,000	2,000	4,000	6,000
Storage Capacity	250 GB	0.5 TB	1TB	2TB	4 TB	6 TB
HARDWARE						
Rackmount Chassis	1U	1U	1U	1U	2U	2U
Dimensions (in.)	7.2 x 1.7 x 19.8	17.2 x 1.7 x 19.8	17.2 x 1.7 x 19.8	17.2 x 1.7 x 19.8	17.4 x 3.5 x 25.5	17.4 x 3.5 x 25.5
Dimensions (cm.)	43.7 x 4.3 x 50.3	43.7 x 4.3 x 50.3	43.7 x 4.3 x 50.3	43.7 x 4.3 x 50.3	44.2 x 8.9 x 64.8	44.2 x 8.9 x 64.8
Weight (lbs. / kg.)	15 / 6.8	21 / 9.5	21 / 9.5	26 / 11.8	52 / 23.6	52 / 23.6
Ethernet	1 x 10/100	1 x 10/100	1 x 10/100	1 x Gigabit	2 x Gigabit	2 x Gigabit
AC Input Current (Amps)	1.8	1.8	2.4	4.1	5.1	5.1
Redundant Disk Array (RAID)		RAID-1	RAID-1	RAID-5	RAID-5	RAID-5
ECC Memory				✓	✓	✓
FEATURES						
Hardened and Secure OS	✓	✓	✓	✓	✓	✓
Comprehensive Archiving	✓	✓	✓	✓	✓	✓
Search and Retrieval	✓	✓	✓	✓	✓	✓
Exchange Stubbing	✓	✓	✓	✓	✓	✓
Reporting and Statistics	✓	✓	✓	✓	✓	✓
Policy Management	✓	✓	✓	✓	✓	✓
Intelligent Storage Manager	✓	✓	✓	✓	✓	✓
Roles-Based Interface	✓	✓	✓	✓	✓	✓
High Availability			✓	✓	✓	✓
Customizable Branding				✓	✓	✓
Hardware iSCSI Adapter					✓	✓



Barracuda Message Archiver Models



Model 150
Max Suggested Mailboxes – 150
Storage Capacity – 250GB



Model 350
Max Suggested Mailboxes – 500
Storage Capacity – .5 TB



Model 450
Max Suggested Mailboxes – 1000
Storage Capacity – 1 TB





Barracuda Message Archiver Models



Model 650
Max Suggested Mailboxes – 2000
Storage Capacity – 2 TB



Model 850
Max Suggested Mailboxes – 4000
Storage Capacity – 4 TB



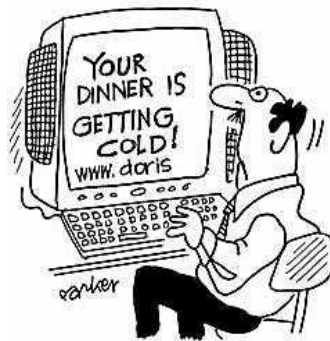
Model 950
Max Suggested Mailboxes – 6000
Storage Capacity – 6 TB





What about IM usage?

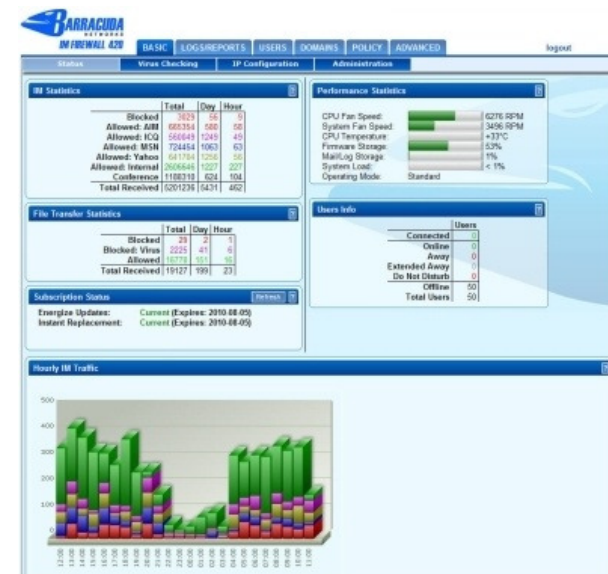
- 31% of organizations have IM policy in place, and only 13% retain IM business records
- 50% of workplace users download free IM tools; 26% of employers aren't aware of it
- Employees use IM for ill-advised purposes (unproductive)
 - Attachments (26%)
 - Jokes, gossip, rumors and disparaging remarks (24%)
 - Confidential company, employee and client information (12%)
 - Sexual, romantic or inappropriate chat (10%)





Barracuda IM Firewall

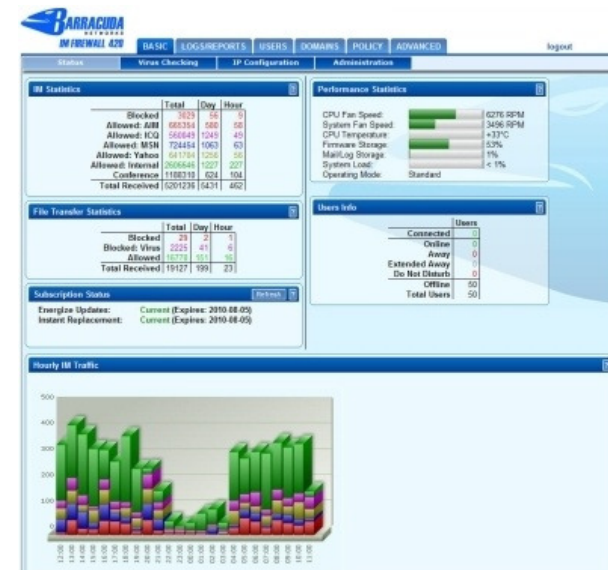
- Productivity Increase
 - Instant Communication
- Administration
 - LDAP and Active Directory compatibility
 - Easy client rollout tools
- Barracuda IM Client
 - Runs on Windows, Macintosh, and Linux computers





Barracuda IM Firewall

- Third Party IM
 - Employees are already using IM
 - Liability Issues
 - No auditing
- Secure Alternative
 - 256-bit AES encryption
 - Logged and auditable
- Block sensitive data from going out of your organization





Block the Spam!



The Barracuda SPAM & Virus FIREWALL

The #1 anti spam solution in the world (60,000 customers)

- A **HARDWARE** solution that installs in 15 minutes or less
- **NO PER USER FEES** – making it very cost effective
- **Virtually maintenance free** – simple to manage – updates hourly automatically
- **Six different models** – supporting ALL organization sizes
- **What's New** – Now includes inbound and outbound filtering



Barracuda Web Filter

- Integrated content filtering and Web security
- Complete content filtering solution
 - Block Web sites by domain, URL pattern, category, application
 - Three modes: monitor, warn and enforce
 - Advanced policy support
- Virus and spyware protection at the gateway
 - Integrated desktop spyware removal
- Ease of deployment
- **What's New** – Cloud based content filtering Solution

